

**24<sup>th</sup> International Caritas Consortium**

# BRIDGING THE PAST WITH THE FUTURE

**Celebrating 40 Years of Caring Science**

---

**Program Brochure**

**October 17 & 18, 2019**

**Fort Mason Center, San Francisco, California**

Hosted by Kaiser Permanente Northern California



**KAISER  
PERMANENTE®**



## Contents

<b>EVENT INFO</b>	2
<b>FEATURED SPEAKERS</b>	3
<b>AGENDA</b>	4
<b>OPEN LEARNING SESSIONS</b>	8
<b>REGISTRATION &amp; ACCOMMODATIONS</b>	10
<b>DINNER CRUISE &amp; ACTIVITIES</b>	11
<b>ABSTRACTS</b>	12
<b>SPONSORSHIP</b>	13
<b>ADDITIONAL EVENT DETAILS</b>	14

### Conference Objectives

1. Apply practices of Caring Science to empower organizational transformation from the inside-out for healthcare across disciplines, specialties, and roles in order to achieve health, healing, and human caring in all environments.
2. Examine how the forty-year history of Caring Science and the Theory of Human Caring has impacted health care communities around the world and across disciplines.

## Event Info

Celebrate more than 40 years of Caring Science with experts from around the world.

Held over two-days, the 24th International Caritas Consortium is being hosted by the Kaiser Permanente Northern California Nurse Scholars Academy.

### Who Should Attend

- Clinicians such as registered nurses, social workers, and physicians
- Interdisciplinary team members such as chaplains, care experience leaders, and pharmacists
- All others who are interested in advancing human caring in health care

### Dates

October 17 and 18, 2019

### Location

Fort Mason Center (Festival Pavilion)  
1 Fort Mason Way, San Francisco, CA

### For More Event Information

→ Visit [eventmobi.com/icc2019](http://eventmobi.com/icc2019)

## Featured Speakers



**Barbara Dossey, PhD, RN, AHN-BC, FAAN, HWNC-BC**

Barbara Dossey is internationally recognized as a pioneer in the holistic nursing and nurse coaching movements. She is a Florence Nightingale scholar, nurse theorist, and national

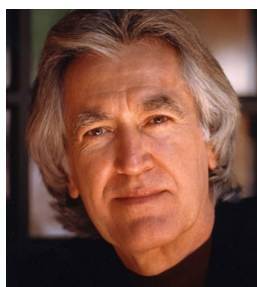
and international speaker and teacher on the role of integrative nurse coaching in the emerging integrative health care paradigm.



**Janet Quinn, PhD, RN, FAAN**

Janet Quinn is an international speaker, consultant, and retreat and workshop facilitator in several content areas, including: Spirituality and Healing; Holistic and Integrative Nursing; Nursing

as Spiritual Practice; the Art and Science of Human Caring; Caring and Healing; The Way of the Healer; Creating Habitats for Healing; and InterSpirituality.



**Larry Dossey, MD**

Larry Dossey is an internal medicine physician. He is currently the executive editor of the peer-reviewed journal Explore: The Journal of Science and Healing. He co-founded the Dallas Diagnostic Association and

is former Chief of Staff of Medical City Dallas Hospital.



**Marlaine Smith, PhD, RN, AHN-BC, HWNC-BC, FAAN**

Marlaine Smith is the Helen K. Persson Eminent Scholar at Florida Atlantic University's Christine E. Lynn College of Nursing.



**Mary Jo Kreitzer, PhD, RN, FAAN**

Mary Jo Kreitzer is the founder and director of the Earl E. Bakken Center for Spirituality & Healing at the University of Minnesota where she also serves as a tenured professor in the School of Nursing.



**Jean Watson, PhD, RN, AHN-BC, FAAN**

Jean Watson is Distinguished Professor and Dean Emerita, University of Colorado Denver, College of Nursing Anschutz Medical Center campus, where she held the nation's first endowed Chair in Caring Science for 16 years. She is founder of the original Center for Human Caring in Colorado and is a Fellow of the American Academy of Nursing; past President of the National League for Nursing; founding member of International Association in Human Caring and International Caritas Consortium. She is Founder and Director of non-profit foundation, Watson Caring Science Institute.

# Agenda | Day 1

DAY 1 // THURSDAY, OCTOBER 17, 2019		
TIME	TOPIC	PRESENTER
7:30 - 8:30 am	— Registration & Breakfast —	
8:30 - 8:45 am	<b>Welcome &amp; Opening Comments</b>	<b>Jim D'Alfonso</b> <i>DNP, RN, PhD(h), NEA-BC, FNAP</i>
8:45 - 9:15 am	<b>Hearts &amp; Minds: The Kaiser Journey</b> Learn about how the systematic implementation of the synthesis of Caring Science and Heart Science has created new distinctive standards for elevating patient care at Kaiser Permanente and throughout the world.  .5 Contact Hour / CE Credit	<b>Jim D'Alfonso</b> <i>DNP, RN, PhD(h), NEA-BC, FNAP</i>
9:15 - 10:15 am	<b>Jean's 40 Year Evolution: From Treatise to Caritas Theory to Unitary Caring Science</b> Explore the evolution of Jean's treatise on nursing, to Caritas Theory to Unitary Caring Science over the course of the last 40 years, making new connections between caring and peace.  1 Contact Hour / CE Credit	<b>Jean Watson</b> <i>PhD, RN, AHN-BC, FAAN</i>
10:15 - 10:30 am	— 15 Minute Break —	
10:30 - 11:45 am	<b>KEYNOTE: Caring Science, Healing, and Nonlocal Mind</b> Following in Florence Nightingale's (1820-1910) footsteps, we explore how Caring Science and unitary nonlocal consciousness are visionary models for one mind, one health, and one planet.  1.25 Contact Hour / CE Credit	<b>Larry Dossey, MD</b>  <b>Barbara Dossey</b> <i>PhD, RN, AHN-BC, FAAN, HWNC-BC</i>
11:45 am - 1:45 pm	<b>Lunch and Exhibitors</b>	

# Agenda | Day 1 (cont.)

DAY 1 // THURSDAY, OCTOBER 17, 2019		
TIME	TOPIC	PRESENTER
12:20 pm - 1:30 pm	<b>Open Learning Sessions</b> Session 1: 12:20 – 12:50 pm Session 2: 1:00 – 1:30 .5 Contact Hour / CE Credit per session	<div>See Page 8 for presenters and topics →</div>
1:45 – 2:00 pm	— Regathering Activity —	
2:00 – 3:00 pm	<b>PANEL: Through the Decades of Caring Science: Inspirations, Contemplations, and Aspirations</b> Explore the multiple decades of the Theory of Human Caring and its impact on the profession of nursing. Panelists: Jean Watson, PhD, RN, FAAN, Kelly Johnson, PhD, RN, Zane Wolf, PhD, RN, FAAN, & Chantal Cara PhD, RN, FAAN 1.0 Contact Hour / CE Credit	Moderated by: <b>Janet Quinn</b> <i>PhD, RN FAAN</i> <b>Marlaine Smith</b> <i>PhD, RN AHN-BC, AWNC-BC, FAAN</i>
3:00 – 3:20 pm	<b>Caritas / Communitas Celebrations</b> Celebrate the shared oneness created by Caritas/Communitas moments, and leadership that lifts up caring and love as a source of all healing.	<b>Jean Watson</b> <i>PhD, RN, AHN-BC, FAAN</i>
3:20 – 3:30 pm	— Closing —	
3:45 – 4:45 pm	<b>Book Signing at the WCSI Caring Store with Jean and other Caring Science authors</b>	

## Thursday Dinner Cruise with Jean Watson

Boards 5:45pm at Pier 3 // Cruise: 6:00 – 9:00 pm

See Page 11 for details →



# Agenda | Day 2

DAY 2 // FRIDAY, OCTOBER 18, 2019		
TIME	TOPIC	PRESENTER
7:30 - 8:30 am	— Registration & Breakfast —	
8:30 - 8:45 am	Welcome & Opening Comments	<b>Jim D'Alfonso</b> <i>DNP, RN, PhD(h), NEA-BC, FNAP</i>
8:45 - 10:15 am	<b>Celebrating Global Caring Connections</b> A deeper look at global Caring Science scholarship, appreciating the diversity yet universal nature of international programs implementing Caring Science. 1.5 Contact Hour / CE Credit	<b>Jean Watson</b> <i>PhD, RN, AHN-BC, FAAN</i>
10:15 - 10:30 am	— 15 Minute Break —	
10:30 - 11:45 am	<b>KEYNOTE: Integrative Nursing and Caring Science: Exploring Convergence and Synergy</b> Learn how Caring Science incorporates the universals of human caring while Integrative Nursing explicates the universals of healing. Integrative nursing is a way of being, knowing and doing that is transforming nursing practice around the globe. 1.25 Contact Hour / CE Credit	<b>MaryJo Krietzer</b> <i>PhD, RN, FAAN</i>
11:45 am - 1:45 pm	Lunch and Exhibitors	
12:20 pm - 1:30 pm	<b>Open Learning Sessions</b> Session 1: 12:20 - 12:50 pm Session 2: 1:00 - 1:30 .5 Contact Hour / CE Credit per session	<div>See Page 9 for presenters and topics →</div>

# Agenda | Day 2 (cont.)

DAY 2 // FRIDAY, OCTOBER 18, 2019		
TIME	TOPIC	PRESENTER
1:45 - 2:00 pm	— Regathering Activity —	
2:00 - 3:00 pm	<p><b>PANEL: Faculty – Caritas Coach Education Program: History and Legacy</b></p> <p>Explore the history and transformative process of the Caritas Coach program, from its inception to the current program, and how Caritas Coaches have impacted self/system/social, global change both nationally and internationally.</p> <p>Panelists: <b>Kathy Sitzman</b>, PhD, CNE, ANEF, FAAN, <b>A. Lynne Wagner</b>, MSN, RN, FACCE, CHMT, <b>Sara Horton-Deutsch</b>, PhD, RN, PMHCNS, FAAN, ANEF, Caritas Coach, HeartMath Trainer, <b>Gayle Casterline</b>, PhD, RN, AHN-BC, <b>Priscilla Javed</b>, DNP, RN, FACHE, Caritas Coach, HeartMath Trainer</p> <p>1 Contact Hour / CE Credit</p>	<p>Moderated by:</p> <p><b>Jim D'Alfonso</b> DNP, RN, PhD(h), NEA-BC, FNAP</p> <p><b>Jan Anderson</b> EdD, RN, AHNC, Caritas Coach, Nurse Educator</p>
3:00 - 3:20 pm	<p><b>Bridging the Past with the Future</b></p> <p>Examining the history of how Caring Science has changed practice and envisioning the future direction towards a moral commitment to humankind.</p> <p>.5 Contact Hour / CE Credit</p>	<p><b>Jean Watson</b> PhD, RN, AHN-BC, FAAN</p>
3:20 - 3:30 pm	— Closing —	

**Caritas Coach Education Program begins Friday evening and runs through Sunday afternoon**

See Page 11 for details →

# Open Learning Sessions | Day 1

**SESSION 1 // 12:20 – 12:50 PM**

## **LUMINARY SALON**

### **Caritas Healing Art : Embody the Creative Spirit within**

Identify the Inner Artist Healer, within the collective energy of the Caritas Field of Creativity in Motion.

**Mary Rockwood Lane, PhD, RN, FAAN**  
*Clinical Associate Professor, University of Florida*

## **COACH SALON**

### **An Integrated Caritas Coach Model for Expanding Professional Practice**

Join us for a panel discussion where Kaiser Permanente Northern California Caritas Coaches will share their story of integrating Caring Science into professional practice within the organization.

**Linda Ackerman, DNP(c), RN**  
**Karen Franchetti, BSN, RN**  
**Charlene Johnson, BSN, RN**

## **CLINICIAN SALON**

### **Caring Science Health Care Organization Accreditation Standards: Become an Accredited Caring Science Organization (Part 1)**

Discover what it takes to becoming an accredited Caring Science organization from Caring Science experts.

**Karen Drenkard, PhD, RN, NEA-BC, FAAN**  
*SVP/Chief Clinical Officer/Chief Nurse,  
The O'Neil Center at GetWellNetwork® Inc.,  
Board of Directors for WCSI*

**SESSION 2 // 1:00 – 1:30 PM**

## **LUMINARY SALON**

### **The Impact of Compassionate Connected Care on Safety, Quality, and Experience**

Examine how authentic caring practices impact patient safety, quality, and the patient perception of compassionate care on the reported overall patient care experience.

**Christy Dempsy, MSN, RN, CNOR, CENP, FAAN**  
*SVP, CNO, Press Ganey Associates*

## **COACH SALON**

### **Self-Transformation through Caritas Consciousness: My Personal Journey to Enlightenment**

Explore Caring Science through a nurse leader's journey, "Self-transformation through Caritas consciousness."

**Cheryl Handy, MSN, RN, NE-BC**  
*Associate Nurse Executive,  
Atlanta VA Health System*

## **CLINICIAN SALON**

### **Caring Science Health Care Organization Accreditation Standards: Measurement Requirements (Part 2)**

Learn specific elements required to become a Caring Science Organization and the required measurements to demonstrate successful caring practices.

**Barbara Brewer, PhD, RN, MALS, MBA, FAAN**  
*Associate Professor, University of Arizona,  
Board of Directors for WCSI*



# Open Learning Sessions | Day 2

**SESSION 1 // 12:20 – 12:50 PM**

## **LUMINARY SALON**

### **Leaders as Weavers – Tapestries of Caritas® Culture into Professional Practice**

Learn how leaders weave Caring Science in the development of a Caritas culture within an organization.

**Gayle Novack, BSN, RN, HNB-BC**  
*Chief Nursing Officer,  
Ascension St. John Hospital Medical Center*

## **COACH SALON**

### **CNEs as Caritas Coaches: Integration of Caring Science into Professional Practice**

Listen to a panel of chief nurse executives who are Caritas Coaches and how Caring Science has elevated professional practice within their organizations.

**Debra Morton, DNP(c), RN**  
**Karen Strauman, DNP(c), RN**  
**Amy Bearden, MSN, RN**  
**Dale Beatty, DNP, RN**

## **CLINICIAN SALON**

### **Integrating Caring Science into Education, Practice and Research**

Discover how integrating Caring Science into education enhances professional practice through research within an organization.

**Marian Turkel, PhD, RN, NEA-BC, FAAN**  
*Associate Professor, Florida Atlantic University*

**SESSION 2 // 1:00 – 1:30 PM**

## **LUMINARY SALON**

### **Caritas HeartMath Methodology – The Integration of Caring Science and Heart Science**

Explore how the integration of HeartMath practices facilitates resilience to promote authentic caring practices.

**Robert Browning, PhD(h), and Sheva Carr**  
*HeartMath LLC*

## **COACH SALON**

### **Empowering Nurses to Become Transformational Leaders through a Caring Science Lens**

Examine how nurses are empowered to become transformational leaders in practice by providing care through the lens of Caring Science.

**Lisa Lally Flack, PhD, RN**  
*Associate Professor, Siena College*

## **CLINICIAN SALON**

### **Using Caritas Consciousness to Create Safe, Nurturing, and Healing Environments for Patients, Families, and Staff**

Understand the impact of Caritas Consciousness in the creation of a safe, nurturing and healing environments for patients, families, and staff.

**Chris Griffin, PhD(c), RN-BC, CPN**  
*Professional Development Specialist,  
Children's Hospital Colorado*

# Registration & Accommodations

## Registration Information

TICKET TYPE	EARLY BIRD (BEFORE SEP 3)		STANDARD	
	1-DAY	2-DAY	1-DAY	2-DAY
General Registration	\$150	\$300	\$175	\$350
WCSI Affiliate / Member	\$125	\$250	\$150	\$300
Kaiser Permanente Employee*	\$100	\$200	\$125	\$250

**Register early as seating is limited.** The program will be held from 7:30 - 3:30 pm Thursday and Friday. The agenda is different each day, and you may choose to attend one or both days.

Daily registration fee includes conference attendance, breakfast, lunch, and continuing education contact hours.

See Page 14 for details about our cancellation policy and obtaining continuing education credits.

### \*Kaiser Permanente Employees

Kaiser Permanente employees may apply for tuition reimbursement for conference attendance. This benefit may cover the entire cost of your conference registration, as well as up to \$500 in eligible travel expenses. [Learn More →](#)

→ **Register now:** [www.eventmobi.com/icc2019](http://www.eventmobi.com/icc2019)



## Hotel Accommodations

Stay close to the venue. Discounted rates are available at the Sheraton Fisherman's Wharf Hotel between 10/14-10/21, subject to availability

Discounted rate: **\$309 per night**

Sheraton Fisherman's Wharf Hotel

2500 Mason Street

San Francisco, California 94133

[Book Now →](#)

# Dinner Cruise & Activities



## WCSI Sponsored Thursday Yacht Dinner Cruise with Jean Watson

In addition to the Consortium, Watson Caring Science Institute invites you to register for a Hornblower Spirit dinner cruise the evening of Thursday, October 17.

Together, we will celebrate Jean Watson and her 40 years of Caring Science on this three-hour cruise.

You can purchase a ticket as part of conference registration or buy a ticket separately. You do not have to attend the conference to attend the dinner cruise. This event is not eligible for continuing education credits and is not sponsored by Kaiser Permanente.

The cruise will feature a three-course seated dinner and beautiful scenic views of San Francisco and the Golden Gate Bridge. Complimentary tea, water, and soda are included, with alcohol available for purchase.

**\$130 (limited to 300 guests)**

Register Now →

## Caritas Coach Program Info

The Watson Caring Science Institute will start a new cohort of the Caritas Coach Education Program immediately following the ICC at the Hyatt Centric hotel. Tuition reimbursement may help cover the cost of this 6-month continuing education program.

**\$2,720 (can be split into three payments)**

→ Learn More: <https://www.watsoncaringscience.org/caritas-coach-education-program-ccep>

## Equine Training Program



Expand your leadership journey at EquuSatori, a beautiful ranch located in Sonoma County Wine Country. October 14-15, experience a hands-on intensive with horses that integrates Caring Science and HeartMath in leadership learning. Contact hours will be offered. This event is not sponsored by Kaiser Permanente and does not offer any continuing education credit or contact hours.

**\$950 (limited to 12 participants)**

For more information, or to register, contact Gwen Kinney at 703-964-7406 or email [Gwen.equusatori@gmail.com](mailto:Gwen.equusatori@gmail.com).

# Abstracts

## Submit an abstract

All interprofessional disciplines and caritas community members are invited to submit a poster abstract that reflects individual or collective work promoting professional practice through the science and art of human caring.

All accepted abstracts will have the opportunity to digitally display their poster on the event website and display screens at the conference. In addition, some abstracts will be invited to present their poster in a physical poster gallery.

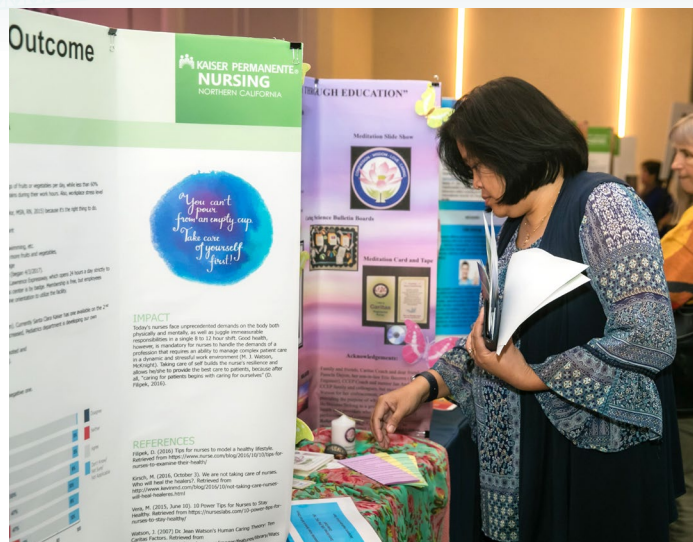
## Abstract Content

Title should have a maximum of 15 words.

Do not include charts, tables, bullet points, references in abstract.

Use the following categories when submitting your abstract (max 500 words):

- Statement of Purpose or Aims of the Research/EBP
- Significance/Background
- Interventions/Methods
- Findings/Results
- Discussion/Conclusion
- Implications for Nursing Practice



## Submission Guidelines

Prepare your abstract with the following instructions in mind. You will submit your abstract by **September 3, 2019** using these guidelines via an online submission survey.

## Selection Criteria

Abstracts for poster presentations will be selected for digital and/or printed display in the poster gallery. Most posters will be accepted for at least digital presentation based on relevance to Caring Science and theory of human caring when submitted in the proper format by the deadline.



## Submission Instructions

Abstracts will be submitted using an online survey and are due for submission by **September 3, 2019 at 11:59pm**.

→ **Register now:** [www.eventmobi.com/icc2019](http://www.eventmobi.com/icc2019)



# Sponsorship

## Sponsorship Info

Help to sustain the ongoing effort to enhance human caring in health care. By being a sponsor, you will reach a unique audience of caring change makers in healthcare and help continue the important work of WCSI globally.

## Sponsorship Inquiries

Peggy Hilden: 415-961-1072 | [Peggy.Hilden@kp.org](mailto:Peggy.Hilden@kp.org)

## Benefits include:

- Supporting the 501c (3) non-profit organization WCSI
- Enhanced visibility to nursing and health care professionals
- Global Audience - attendees and speakers represent many parts of the world
- Deepen old relationships and create new ones
- Attendees represent all areas of nursing - front line, senior leaders, and academia

LEVEL	DIAMOND	PLATINUM	GOLD	SILVER	BRONZE
AMOUNT	\$25,000+	\$10,000	\$5,000	\$3,000	\$1,500
Four Complimentary Full Conference Registrations	✓				
Hornblower Dinner Cruise with Dr. Watson	✓				
Column Banner Sponsor Ad (6 available)	✓	✓			
Continuing Education Salon Session Sponsor Ad (3 available)	✓	✓			
Three Complimentary Full Conference Registrations	✓	✓			
Logo on Conference Bag	✓	✓	✓		
Conference Site and App Ad	✓	✓	✓	✓	
Conference App Rotating Ad	✓	✓	✓	✓	
Two Complimentary Full Conference Registrations	✓	✓	✓	✓	
One Full Conference Registration	✓	✓	✓	✓	✓
Exhibit Booth and Table	✓	✓	✓	✓	✓

## Current Sponsors



## Additional Event Details



### California Board of Registered Nursing Contact Hours

Provider approved by the California Board of Registered Nursing, Provider Number 2365, for contact hours listed:

*BRN Range for Day 1: 3.75 – 4.75; Day 2: 4.0 – 5.0*

### California Board of Behavioral Science Continuing Education Credits

Course meets the qualifications for the listed hours of continuing education (CE) credits for LMFT's, LCSW's, LPCC's, and/or LEP's as required by the California Board of Behavioral Sciences.

NCAL Kaiser Permanente Patient Care Services is approved by the California Association of Marriage and Family Therapists to sponsor continuing education for LMFT's, LCSW's, LPCC's, and/or LEP's.

NCAL Kaiser Permanente Patient Care Services maintains responsibility for this program/course and its content.

*CAMFT CE Credit Range for Day 1: 3.75 – 4.75;  
Day 2: 4.0 – 5.0*

### Cancellation Policy

All conference registrations are final and non-refundable. Registration costs will not be refunded in the case of non-attendance.

### Continuing Education Certificates

Following completion of the program, all attendees will be emailed with a link to complete the program evaluation survey. Once the evaluation survey is completed, participants will receive their continuing education certificate within 7 working days.

### Request for Special Accommodations

Any requests for special accommodations for disability or other special needs should be sent to [kpnursescholars@kp.org](mailto:kpnursescholars@kp.org). We will make every attempt to accommodate your requests.

### Addressing Grievances

Any grievances or issues you experience before, during, or after the program can be sent to [kpnursescholars@kp.org](mailto:kpnursescholars@kp.org). We will respond to your inquiry as quickly as possible, but within no more than 7 working days.